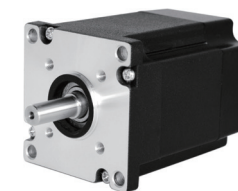


Brushless DC Motors 无刷直流电机

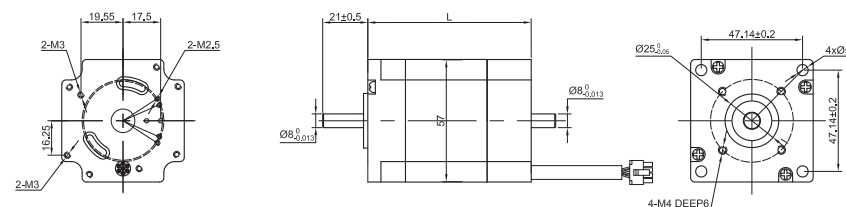
57BSB Series



General Specification

Winding type 绕组连续方式	YWE
Hall effect angle 霍尔分布角度	120 Deg. Electrical angle
Radial play 径向间隙	0.025mm /460g
End play 轴向间隙	0.025mm /400g
Max. radial force 径向最大承受力	75N @ 20mm from the flange
Max. axial force 轴向最大承受力	15N
Insulation class 绝缘等级	B
Dielectric strength 介电强度	500VDC for one minute
Insulation resistance 绝缘电阻	100MΩ min., 500VDC

Dimensions in mm



Performance Data

Model 型号	Units	57BSB076 B010X-01	57BSB076 B030X-01	57BSB096 B010X-01	57BSB096 B030X-01	57BSB116 B010X-01	57BSB116 B030X-01
Number of poles 极数					8		
Number of phase 相数					3		
Rated voltage 额定电压	VDC				24		
Rated speed 额定转速	RPM	1000	3000	1000	3000	1000	3000
Continuous stall torque 持续堵转转矩	N.m	0.36	0.36	0.54	0.54	0.72	0.72
Rated torque 额定转矩	N.m	0.3	0.3	0.45	0.45	0.6	0.6
Rated power 额定功率	W	31.5	94.5	47	141	63	188
Peak torque 峰值扭矩	N.m	0.9	0.9	1.35	1.35	1.8	1.8
Peak current 峰值电流	A	5.6	16.8	8.4	25.2	11.25	33.5
Torque constant 转矩常数	Nm/A	0.16	0.053	0.16	0.053	0.16	0.053
Back E.M.F 反电势	V/KRPM	13	6	13	6	13	6
Rotor inertia 转动惯量	g.cm ²	100	100	150	150	200	200
Body length 电机长度	mm	76	76	96	96	116	116
Voltage range 电压范围	VDC				12~80		
Speed Range 转速范围	RPM				1000~3000		
Weight 重量	Kg	0.65	0.65	0.95	0.95	1.25	1.25