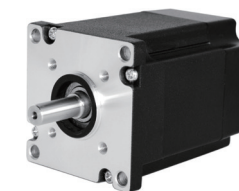


Brushless DC Motors 无刷直流电机

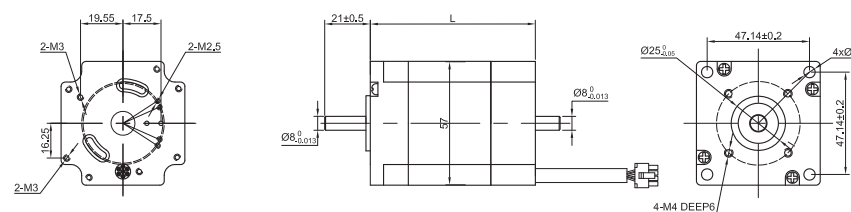
57BSA Series (big torque)



General Specification

Winding type 绕组连续方式	YWE
Hall effect angle 霍尔分布角度	120 Deg. Electrical angle
Radial play 径向间隙	0.02mm /460g
End play 轴向间隙	0.02mm /400g
Max. radial force 径向最大承受力	15N @ 10mm from the flange
Max. axial force 轴向最大承受力	10N
Insulation class 绝缘等级	B
Dielectric strength 介电强度	500VDC for one minute
Insulation resistance 绝缘电阻	100MΩ min., 500VDC

Dimensions in mm



Performance Data

Model 型号	Units	57BSA060 B010X-01	57BSA060 B030X-01	57BSA080 B010X-01	57BSA080 B030X-01	57BSA100 B010X-01	57BSA100 B030X-01
Number of poles 极数		8					
Number of phase 相数		3					
Rated voltage 额定电压	VDC	24					
Rated speed 额定转速	RPM	1000	3000	1000	3000	1000	3000
Continuous stall torque 持续堵转转矩	N.m	0.24	0.24	0.48	0.48	0.72	0.72
Rated torque 额定转矩	N.m	0.2	0.2	0.4	0.4	0.6	0.6
Rated power 额定功率	W	21	63	42	125	62	188
Peak torque 峰值转矩	N.m	0.6	0.6	1.2	1.2	1.8	1.8
Peak current 峰值电流	A	3.28	9.84	3.28	9.84	3.28	9.84
Torque constant 转矩常数	Nm/A	0.227	0.058	0.227	0.058	0.227	0.058
Back E.M.F 反电势	V/KRPM	24	6.1	24	6.1	24	6.1
Rotor inertia 转动惯量	g.cm ²	145	145	286	286	420	420
Body length 电机长度	mm	59	59	80	80	101	101
Voltage range 电压范围	VDC	12~80					
Speed Range 转速范围	RPM	1000~3000					
Weight 重量	Kg	0.6	0.6	1	1	1.5	1.5