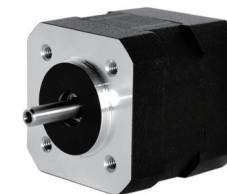


Brushless DC Motors 无刷直流电机

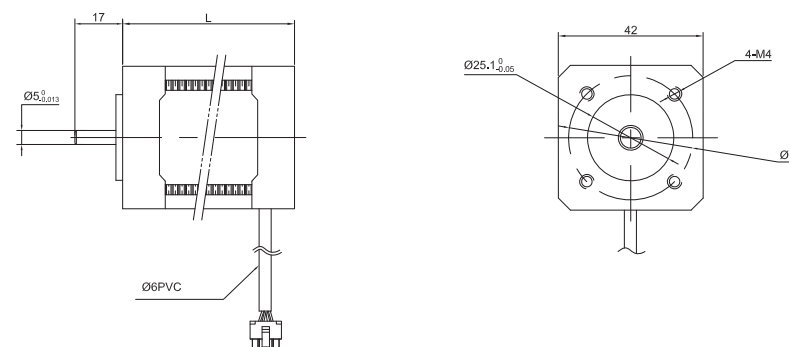
42BSB Series



General Specification

Winding type 绕组连续方式	YWE
Hall effect angle 霍尔分布角度	120 Deg. Electrical angle
Radial play 径向间隙	0.025mm /400g
End play 轴向间隙	0.025mm /400g
Max. radial force 径向最大承受力	15N @ 10mm from the flange
Max. axial force 轴向最大承受力	10N
Insulation class 绝缘等级	B
Dielectric strength 介电强度	500VDC for one minute
Insulation resistance 绝缘电阻	100MΩ min., 500VDC

Dimensions in mm



Performance Data

Model 型号	Units	42BSB041 B020X-01	42BSB041 B040X-01	42BSB041 B080X-01	42BSB061 B020X-01	42BSB061 B040X-01	42BSB061 B080X-01	42BSB081 B020X-01	42BSB081 B040X-01	42BSB101 B020X-01	42BSB101 B040X-01
Number of poles 极数							8				
Number of phase 相数							3				
Rated voltage 额定电压	VDC						24				
Rated speed 额定转速	RPM	2000	4000	8000	2000	4000	8000	2000	8000	2000	4000
Continuous stall torque 持续堵转转矩	N.m	0.072	0.072	0.072	0.144	0.144	0.144	0.225	0.225	0.300	0.300
Rated torque 额定转矩	N.m	0.063	0.063	0.063	0.125	0.125	0.125	0.19	0.19	0.250	0.250
Rated power 额定功率	W	13	26	52	26	52	104	39.5	79	52.5	105.0
Peak torque 峰值扭矩	N.m	0.19	0.19	0.19	0.375	0.375	0.375	0.57	0.57	0.75	0.750
Peak current 峰值电流	A	2.7	5.4	10.8	5.3	10.6	10.6	7.25	14.5	10	20.00
Torque constant 转矩常数	Nm/A	0.074	0.035	0.02	0.074	0.035	0.035	0.074	0.035	0.074	0.035
Back E.M.F 反电势	V/KRPM	7.82	3.66	2.1	7.82	3.66	3.66	7.82	3.66	7.82	3.66
Rotor inertia 转动惯量	g.cm ²	24	24	24	48	48	48	72	72	96.00	96.00
Body length 电机长度	mm	41	41	41	61	61	61	81	81	101	101
Voltage range 电压范围	VDC						12 ~ 48				
Speed Range 转速范围	RPM						2000 ~ 8000				
Weight 重量	Kg	0.3	0.3	0.3	0.45	0.45	0.45	0.6	0.6	0.80	0.80