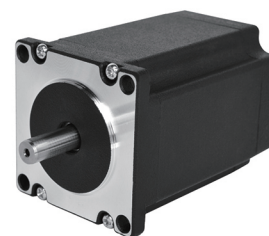


57HSM Series (0.9 degree)

General Specification

Step Angle Accuracy 步距角精度	± 5% (full step, no load)
Resistance Accuracy 电阻公差	± 10%
Inductance Accuracy 电感公差	± 20%
Temperature Rise 温升	80°C max (rated current, 2 phase on)
Ambient Temperature 工作环境温度	-20°C ~ +50°C
Insulation Resistance 绝缘电阻	100MΩ min, 500VDC
Dielectric Strength 介电强度	500VDC for one minute
Shaft Radial Play 径向跳动	0.02mm max (450g load)
Shaft Axial Play 轴向游隙	0.08mm max (450g load)
Max. Radial Force 最大径向力	75N (20mm from the flange)
Max. Axial Force 最大轴向力	15N
Rotation 转向	CCW
Insulation Class 绝缘等级	B (130°C)



Performance Data

part number 型号	57HS041ME 048X-01	57HS051MF 600X-01	57HS056MF 160X-01	57HS076MF 200X-01
length(mm) 长度	41	51	56	76
step angle deg 步距角	0.9°	0.9°	0.9°	0.9°
resistance (Ω) 电阻	0.48	6	1.6	2
current (A) 电流	5.4	0.88	2	2
voltage 电压	2.592	5.28	3.2	4
holding torque (N.cm) 保持力矩	28	100	100	182
lead wires /pins 引出线 / 针脚	8	4	4	4
rotor inertia (g.cm ²) 转动惯量	130	220	270	450
weight (kg) 重量	0.47	0.57	0.65	1

part number 型号	57HS080ME182X-01	57HS085MF26JX-01	57HS100MF070X-01
length(mm) 长度	80	85	100
step angle deg 步距角	0.9°	0.9°	0.9°
resistance (Ω) 电阻	1.82	26	0.7
current (A) 电流	2.1	0.5	3
voltage 电压	3.822	13	2.1
holding torque (N.cm) 保持力矩	130	200	200
lead wires /pins 引出线 / 针脚	8	4	4
rotor inertia (g.cm ²) 转动惯量	490	520	630
weight (kg) 重量	1.1	1.2	1.4

Dimensions in mm

