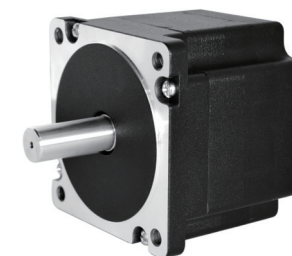


Brushless DC Motors 无刷直流电机

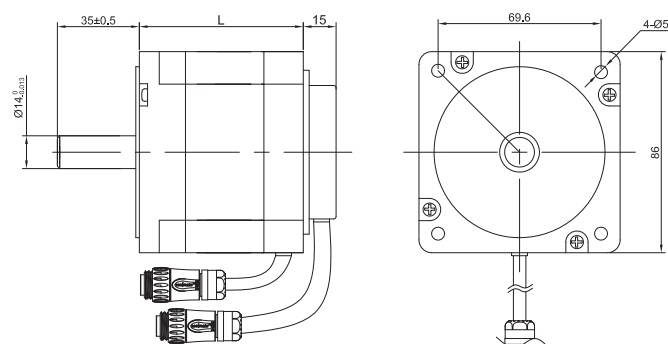
86BSD Series (4Poles 4 极电机)



General Specification

Winding type 绕组连续方式	YWE
Hall effect angle 霍尔分布角度	120 Deg. Electrical angle
Radial play 径向间隙	0.02mm /460g
End play 轴向间隙	0.08mm /400g
Max. radial force 径向最大承受力	220N @ 20mm from the flange
Max. axial force 轴向最大承受力	60N
Insulation class 绝缘等级	B
Dielectric strength 介电强度	500VDC for one minute
Insulation resistance 绝缘电阻	100MΩ min., 500VDC

Dimensions in mm



Performance Data

Model 型号	Units	86BSD071 B020X-01	86BSD071 D040X-01	86BSD098 D020X-01	86BSD098 I060X-01	86BSD125 D020X-01	86BSD125 I060X-01
Number of poles 极数				4			
Number of phase 相数				3			
Rated voltage 额定电压	VDC	24	48	48	310	48	310
Rated speed 额定转速	RPM	2000	4000	2000	6000	2000	6000
Continuous stall torque 持续堵转转矩	N.m	0.84	0.84	1.68	1.68	2.52	2.2
Rated torque 额定转矩	N.m	0.7	0.7	1.4	1.4	2.1	2
Rated power 额定功率	W	147	293	293	879	440	1256
Peak torque 峰值转矩	N.m	2.1	2.1	4.2	4.2	6.3	6
Peak current 峰值电流	A	25	25	24.7	10.8	36	15.4
Torque constant 转矩常数	Nm/A	0.084	0.084	0.17	0.39	0.175	0.39
Back E.M.F 反电势	V/KRPM	8.9	8.9	18	41.3	18.5	41.3
Rotor inertia 转动惯量	Kg.cm ²	0.7	0.7	1.4	1.4	2.1	2.1
Body length 电机长度	mm	71	71	98	98	125	125
Voltage range 电压范围	VDC			12 ~ 310			
Speed Range 转速范围	RPM			2000 ~ 6000			
Weight 重量	Kg	1.9	1.9	2.6	2.6	4	4