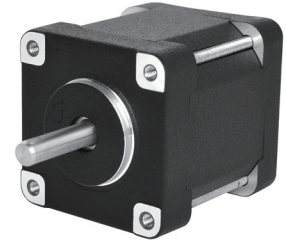


39HSD Series (1.8 degree)

General Specification

Step Angle Accuracy 步距角精度	± 5% (full step, no load)
Resistance Accuracy 电阻公差	± 10%
Inductance Accuracy 电感公差	± 20%
Temperature Rise 温升	80°C max (rated current, 2 phase on)
Ambient Temperature 工作环境温度	-20°C ~ +50°C
Insulation Resistance 绝缘电阻	100MΩ min, 500VDC
Dielectric Strength 介电强度	500VDC for one minute
Shaft Radial Play 径向跳动	0.02mm max (450g load)
Shaft Axial Play 轴向游隙	0.08mm max (450g load)
Max. Radial Force 最大径向力	28N (20mm from the flange)
Max. Axial Force 最大轴向力	10N
Rotation 转向	CCW
Insulation Class 绝缘等级	B (130°C)



Performance Data

part number 型号	39HS020DF300X-01	39HS022DF910X-01	39HS024DF440X-01	39HS026DF10JX-01	39HS027DS30JX-01
length(mm) 长度	20	22	24	26	27
step angle deg 步距角	1.8°	1.8°	1.8°	1.8°	1.8°
resistance (Ω) 电阻	3	9.1	4.4	10	30
current (A) 电流	1.2	0.55	0.9	0.6	0.4
voltage 电压	3.6	5.005	3.96	6	12
holding torque (N.cm) 保持力矩	10.8	8.2	5	15	15
lead wires /pins 引出线 / 针脚	4	4	4	4	6
rotor inertia (g.cm ²) 转动惯量	11	12	14	15	16
weight (kg) 重量	0.13	0.135	0.14	0.145	0.15

part number 型号	39HS033DF700X-01	39HS037DS750X-01	39HS039DF400X-01	39HS044DF40JX-01
length(mm) 长度	33	37	39	44
step angle deg 步距角	1.8°	1.8°	1.8°	1.8°
resistance (Ω) 电阻	7	7.5	4	40
current (A) 电流	0.65	0.8	1.1	0.3
voltage 电压	4.55	6	4.4	12
holding torque (N.cm) 保持力矩	17	20	22	28
lead wires /pins 引出线 / 针脚	4	6	4	4
rotor inertia (g.cm ²) 转动惯量	20	27	32	35
weight (kg) 重量	0.18	0.22	0.24	0.27

Dimensions in mm

