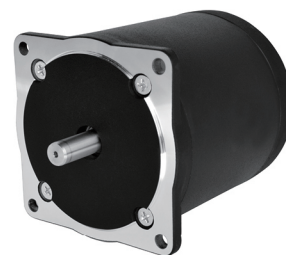


# 86HYD Series (1.8 degree)

## General Specification

|                            |  |
|----------------------------|--|
| Step Angle Accuracy 步距角精度  | ± 5% ( full step, no load )            |
| Resistance Accuracy 电阻公差   | ± 10%                                  |
| Inductance Accuracy 电感公差   | ± 20%                                  |
| Temperature Rise 温升        | 80°C max ( rated current, 2 phase on ) |
| Ambient Temperature 工作环境温度 | -20°C ~ +50°C                          |
| Insulation Resistance 绝缘电阻 | 100MΩ min, 500VDC                      |
| Dielectric Strength 介电强度   | 500VDC for one minute                  |
| Shaft Radial Play 径向跳动     | 0.02mm max ( 450g load )               |
| Shaft Axial Play 轴向游隙      | 0.08mm max ( 450g load )               |
| Max. Radial Force 最大径向力    | 75N ( 20mm from the flange )           |
| Max. Axial Force 最大轴向力     | 15N                                    |
| Rotation 转向                | CCW                                    |
| Insulation Class 绝缘等级      | B (130°C )                             |



## Performance Data

| part number 型号                           | 86HY064DF100X-01 | 86HY075DF020X-01 | 86HY092DE270X-01 | 86HY112DE080X-01 | 86HY129DE070X-01 |
|--|------------------|------------------|------------------|------------------|------------------|
| length(mm ) 长度                           | 64               | 75               | 92               | 122              | 129              |
| step angle deg 步距角                       | 1.8°             | 1.8°             | 1.8°             | 1.8°             | 1.8°             |
| resistance (Ω) 电阻                        | 1                | 0.2              | 2.7              | 0.8              | 0.7              |
| current (A) 电流                           | 2.5              | 6.8              | 2                | 4                | 5                |
| voltage 电压                               | 2.5              | 1.36             | 5.4              | 3.2              | 3.5              |
| holding torque (N.cm) 保持力矩               | 180              | 160              | 350              | 480              | 440              |
| lead wires /pins 引出线 / 针脚                | 4                | 4                | 8                | 8                | 8                |
| rotor inertia ( g.cm <sup>2</sup> ) 转动惯量 | 570              | 800              | 1200             | 1750             | 2100             |
| weight ( kg ) 重量                         | 1.5              | 1.9              | 2.6              | 3.2              | 3.6              |

## Dimensions in mm

