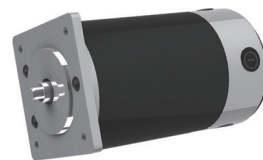


100ZYT Series

General Specification

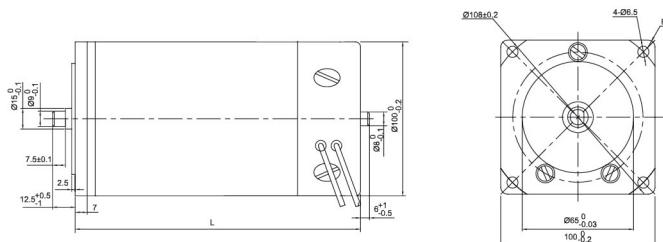
Voltage Range 电压范围	12 & 24V dc (48V also available)
Power Output Range 输出功率范围	90 ~ 150 W
Speed Range 转速范围	up to 9,000 rpm
Operational Temperature 操作温度	-20°C ~ +40°C
Insulation Class 绝缘等级	F (consult us for class B)
Bear Type 轴承类型	High quality ball bearings
Housing Type 机壳种类	Closed (ventilated also available)



Performance Data

Part Number 型号	Units	100ZYT145-12V	100ZYT145-24V	100ZYT165-12V	100ZYT165-24V	100ZYT200-12V	100ZYT200-24V
Voltage 电压	V	12	24	12	24	12	24
Rated Power 额定功率	W	290	290	197	348	188	188
Rated Speed 额定转速	rpm	3450	3450	2350	4150	1500	1500
Rated Torque 额定扭矩	Nm	0.8	0.8	0.8	0.8	1.2	1.2
Rated Current 额定电流	A	32.5	15.6	22	20.3	24.5	13
No load Current 空载电流	A	5	2.3	3	3.5	3	1.5
No load Speed 空载转速	rpm	3920	3920	2250	4660	1900	1900
Length 长度	mm	145	145	165	165	200	200

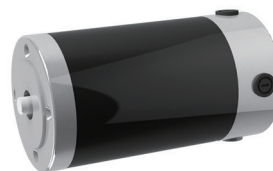
Dimensions in mm



110ZYT Series

General Specification

Voltage Range 电压范围	24V dc (220V also available)
Power Output Range 输出功率范围	250 ~ 600 W
Speed Range 转速范围	up to 9,000 rpm
Operational Temperature 操作温度	-20°C ~ +40°C
Insulation Class 绝缘等级	F (consult us for class B)
Bear Type 轴承类型	High quality ball bearings
Housing Type 机壳种类	Closed (ventilated also available)



Performance Data

Part Number 型号	Units	110ZYT200-12V	110ZYT200-24V	110ZYT200-48v
Voltage 电压	V	12	24	48
Rated Power 额定功率	W	283	514	553
Rated Speed 额定转速	rpm	2700	3070	3300
Rated Torque 额定扭矩	Nm	1	1.6	1.6
Rated Current 额定电流	A	34.6	26	14.3
No load Current 空载电流	A	4.9	2.6	2.5
No load Speed 空载转速	rpm	3270	3350	3300
Length 长度	mm	200	200	200

Dimensions in mm

