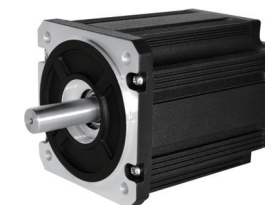


Brushless DC Motors 无刷直流电机

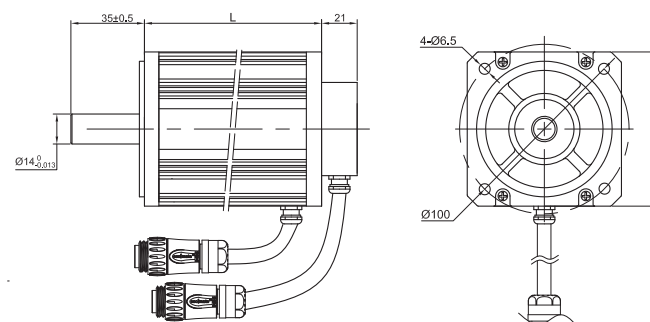
90BSB Series (4Poles 4 极电机)



General Specification

Winding type 绕组连续方式	YWE
Hall effect angle 霍尔分布角度	120 Deg. Electrical angle
Radial play 径向间隙	0.02mm /460g
End play 轴向间隙	0.08mm /450g
Max. radial force 径向最大承受力	220N @ 20mm from the flange
Max. axial force 轴向最大承受力	60N
Insulation class 绝缘等级	B
Dielectric strength 介电强度	500VDC for one minute
Insulation resistance 绝缘电阻	100M Ω min., 500VDC

Dimensions in mm



Performance Data

Model 型号	Units	90BSB068 B040X-01	90BSB075 D040X-01	90BSB088 D020X-01	90BSB088 D060X-01	90BSB108 D020X-01	90BSB108 D040X-01	90BSB136 I020X-01	90BSB136 I060X-01
Number of poles 极数						4			
Number of phase 相数						3			
Rated voltage 额定电压	VDC	24	48	48	48	48	48	310	310
Rated speed 额定转速	RPM	4000	4000	2000	6000	2000	4000	2000	6000
Continuous stall torque 持续堵转转矩	N.m	0.6	0.8	1.2	1.2	1.7	1.7	2.2	2.2
Rated torque 额定转矩	N.m	0.5	0.7	1	1	1.6	1.6	2	2
Rated power 额定功率	W	209	293	209	628	335	628	524	1256
Peak torque 峰值转矩	N.m	1.5	2.1	3	3	4.8	4.5	7.5	6
Peak current 峰值电流	A	17.3	24.2	17.4	35	27.8	51.8	6.6	14.7
Torque constant 转矩常数	Nm/A	0.087	0.087	0.172	0.086	0.172	0.087	1.137	0.409
Back E.M.F 反电势	V/KRPM	9.2	9.2	18.24	9.06	18.24	9.2	120.3	43.3
Rotor inertia 转动惯量	kg.cm ²	0.45	0.6	0.9	0.9	2.1	2.1	2.95	2.95
Body length 电机长度	mm	68	75	88	88	108	108	136	136
Voltage range 电压范围	VDC		12~80				48~310		
Speed Range 转速范围	RPM				2000 ~ 6000				
Weight 重量	Kg	1.4	1.7	2.1	2.1	2.6	2.6	4.1	4.1