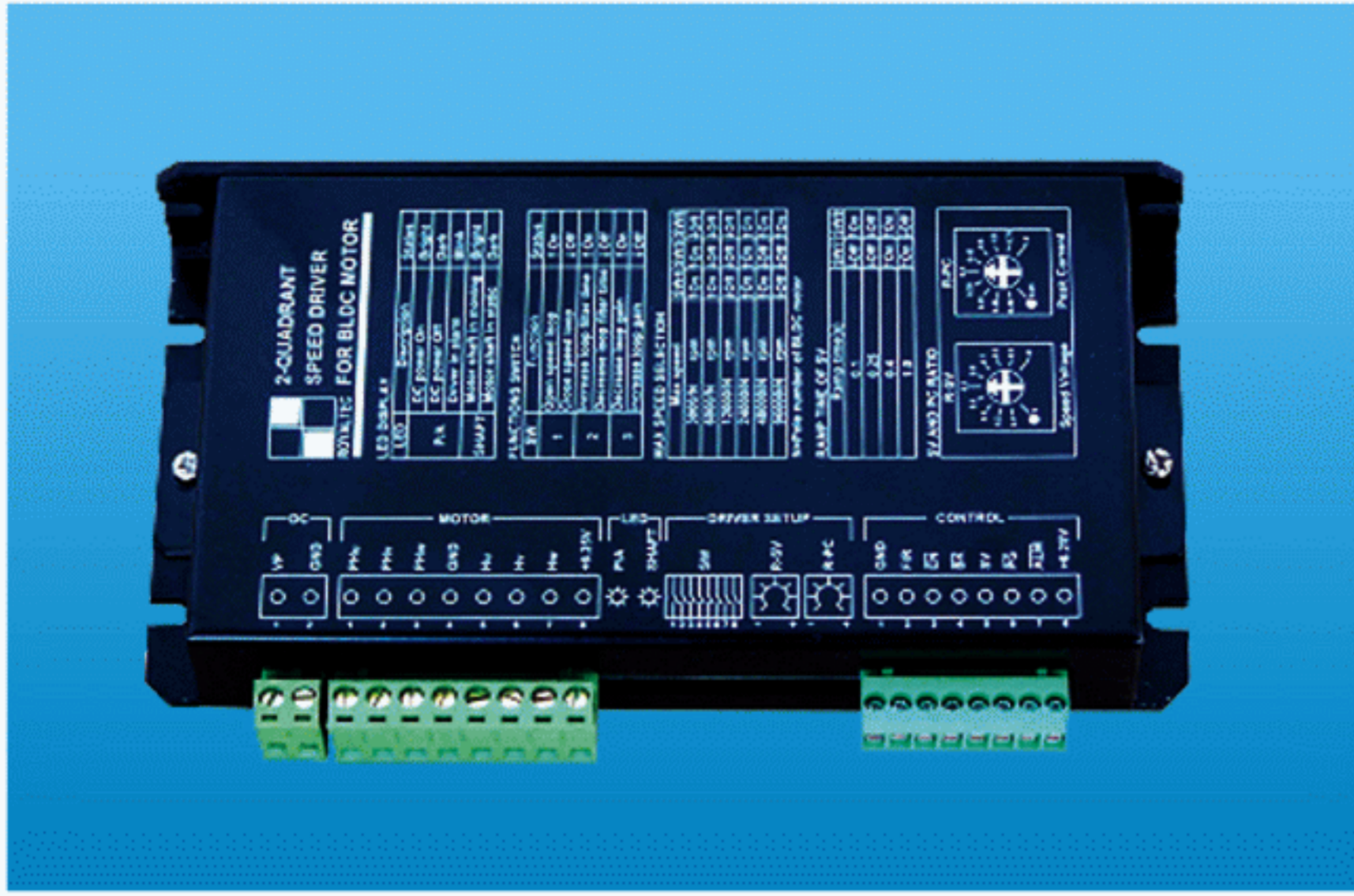


BLSD Series

2-Quadrant BLDC Speed Control Drive



General Description

The BLSD Series presents a range of high performance Brushless DC Motors drives offering high continuous current possibilities in a range of voltages including 24, 36 and 48v.

BLSD Series drives utilise Hall Effect feedback from the motor sensors to provide stable speed control to within +/-3%.

Each drive in the series includes integrated low voltage and thermal protection capabilities.

Technical Specification

BLSD 24 XX DC-2Q

Features

- Supply voltage 24V
- Continuous current 5 & 10A
- Peak current 10 & 20A
- Low voltage protection level 17V
- Thermal protection voltage 34V

BLSD 36 XX DC-2Q

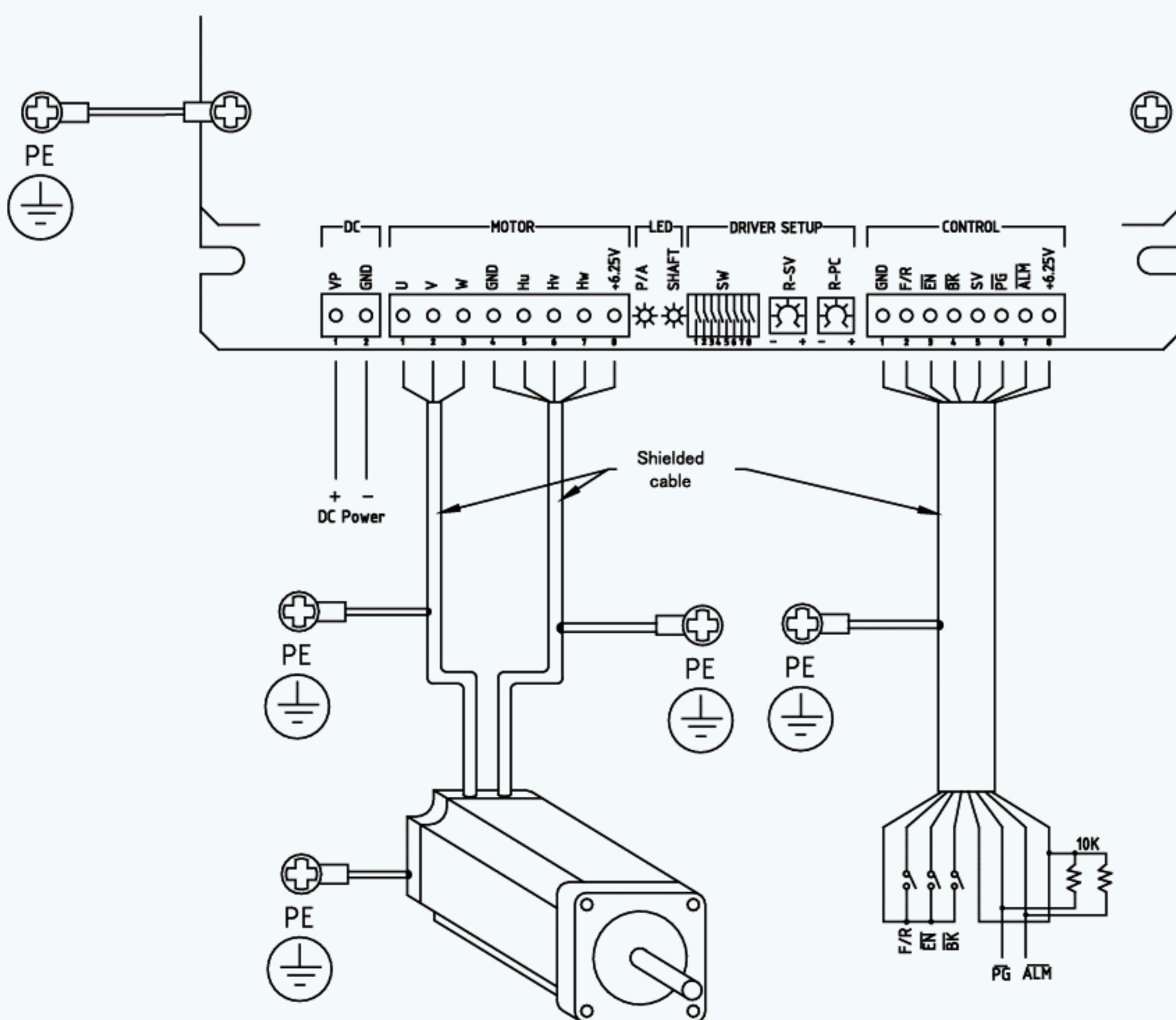
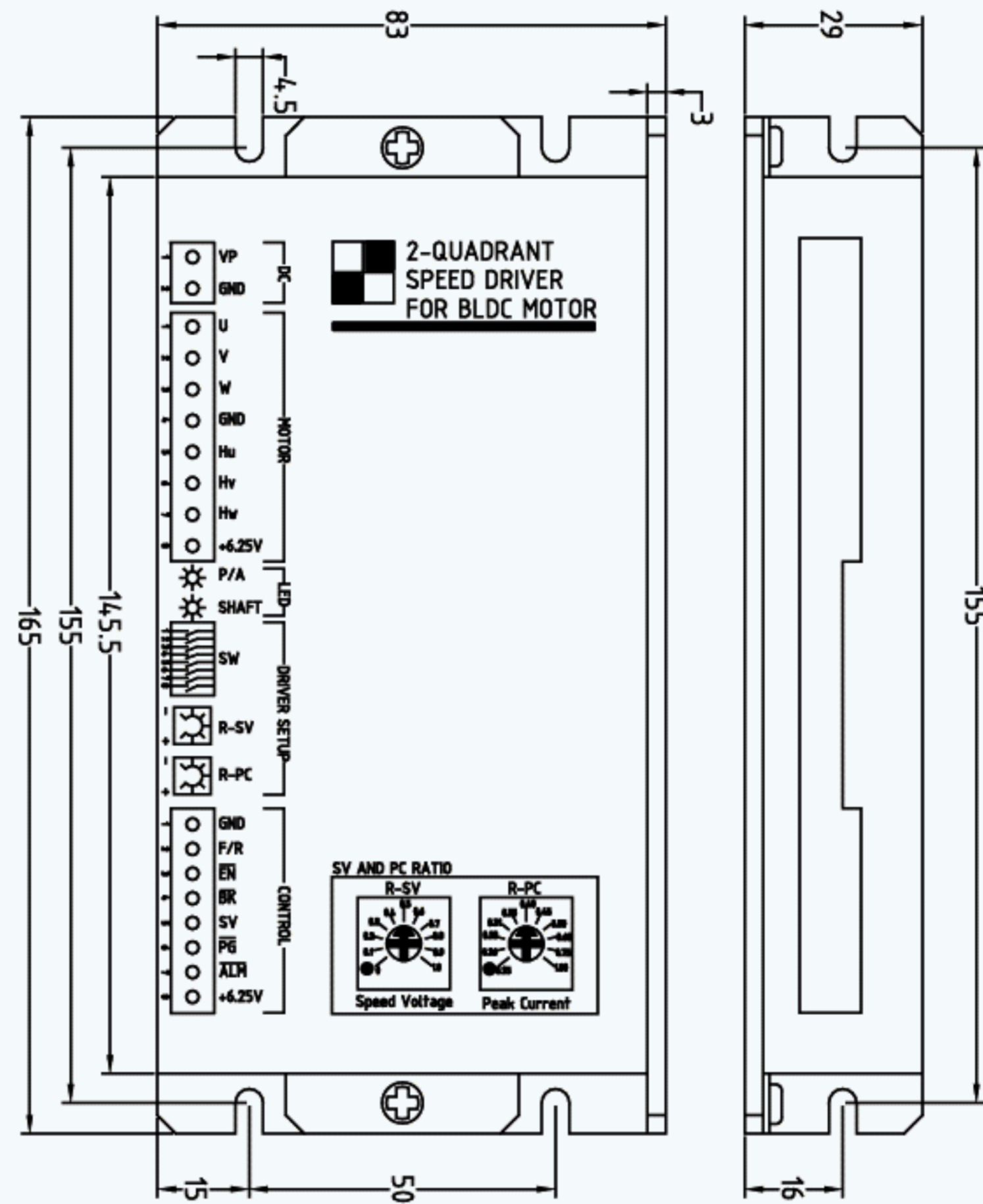
Features

- Supply voltage 36V
- Continuous current 5 & 10A
- Peak current 10 & 20A
- Low voltage protection level 27V
- Thermal protection voltage 45V

BLSD 48 XX DC-2Q

Features

- Supply voltage 48V
- Continuous current 5 & 10A
- Peak current 10 & 20A
- Low voltage protection level 36V
- Thermal protection voltage 57V



LED DISPLAY

LED	Description	Status
P/A	DC power On	Bright
	DC power Off	Dark
SHAF	Driver in alarm	Blink
	Motor shaft in moving	Bright
SHAF	Motor shaft in static	Dark

FUNCTION SWITCH

SW	Function	Status
1	Open speed loop	↑On
	Close speed loop	↓Off
2	Increase loop filter time	↑On
	Decrease loop filter time	↓Off
3	Decrease loop gain	↑On
	Increase loop gain	↓Off

MAX SPEED SELECTION

Max speed	SW4	SW5	SW6
3000/N rpm	↑On	↑On	↑Off
6000/N rpm	↑On	↓Off	↓Off
12000/N rpm	↓Off	↓Off	↓Off
24000/N rpm	↑On	↑On	↑On
48000/N rpm	↑On	↓Off	↑On
96000/N rpm	↓Off	↓Off	↑On

N=Pole number of BLDC motor

RAMP TIME OF SV

Ramp time (S)	SW7	SW8
0.1	↓Off	↑On
0.25	↓Off	↓Off
0.4	↑On	↑On
1.0	↑On	↓Off

SV AND PC RATIO

